

## GUIDE TO SCREW PRESS SELECTION

Dupps  
Screw Presses



## A full line of solutions for your separation applications

Over a thousand Dupps screw presses are now operating every day in plants around the world. Their high return on investment — achieved by combining high quality and high capacity with low maintenance and low-cost operation — makes them the right choice for applications as diverse as these:

### Protein by-products rendering

Dupps has successfully designed, built and installed rendering equipment throughout the world for more than seventy years. And we perfected the concept of continuous rendering, which uses the Pressor® screw press. No one has more experience in turning the by-products of beef, pork, poultry and more into profitable products such as high protein meals and fats.

### Sludge dewatering

Many of today's leading pulp and paper mills use Dupps screw presses to dewater sludge, thus reducing solid waste weight and volume. It's just one application this reliability-conscious industry is finding for durable Dupps equipment.

### And many more applications . . .

. . . including oil seed processing (such as extracting meal and oil from soybeans), vegetable oil recovery, cocoa butter extraction and even food grade processing. Dupps can engineer and build screw presses or complete turnkey systems specifically for your needs.

## High Volume Horizontal Screw Presses

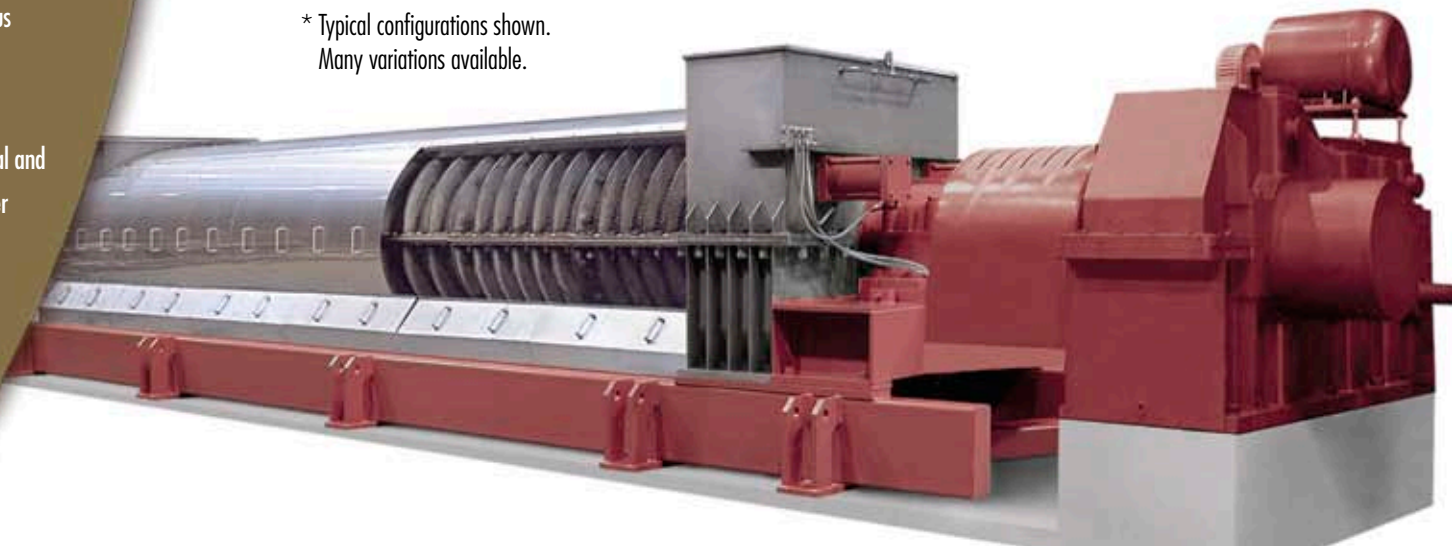
Your best choice for high volume dewatering

- Adjustable clearance between screen and shaft flighting allows easy wear compensation.
- Uniquely tapered cast stainless steel screw shaft.
- Pneumatic choke with torque limiting device provides lock-up protection.
- Replaceable wear shoes on shaft flights for greater durability.
- Heavy-duty bearings for shaft support and thrust loads.
- Distinctive chute design permits easy feeding.
- Rugged multiple reduction gear box with automatic variable speed.
- Unique center drainage design.
- Steam can be used in the shaft for additional cake dryness.
- ASME code stamped.

### Specifications\*

MODEL	LENGTH		WIDTH		HEIGHT		DRY WEIGHT	
	ft.	mm	ft.	mm	ft.	mm	lbs.	kg
<b>2412</b>	24'-6"	7,468	7'-2"	2,184	5'-0"	1,524	33,900	15,380
<b>2416</b>	28'-7"	8,712	7'-2"	2,184	5'-0"	1,524	35,900	16,290
<b>2420</b>	32'-8"	9,957	7'-2"	2,184	5'-0"	1,524	37,800	17,150
<b>3016</b>	30'-9"	9,373	8'-6"	2,591	7'-2"	2,184	44,500	20,190
<b>3020</b>	34'-9"	10,592	8'-6"	2,591	7'-2"	2,184	48,200	21,860
<b>3616</b>	30'-9"	9,373	8'-11"	2,718	7'-9"	2,362	53,000	24,040
<b>3620</b>	34'-10"	10,617	8'-11"	2,718	7'-9"	2,362	58,500	26,540
<b>3624</b>	38'-11"	11,862	8'-11"	2,718	7'-9"	2,362	63,180	28,660
<b>4220</b>	34'-11"	10,643	8'-11"	2,718	8'-4"	2,540	61,200	27,760
<b>4224</b>	38'-11"	11,862	8'-11"	2,718	8'-4"	2,540	65,500	29,710
<b>4228</b>	42'-11"	13,081	8'-11"	2,718	8'-4"	2,540	69,600	31,570
<b>5528</b>	47'-6"	14,478	11'-2"	3,404	8'-9"	2,667	88,000	39,920

\* Typical configurations shown.  
Many variations available.





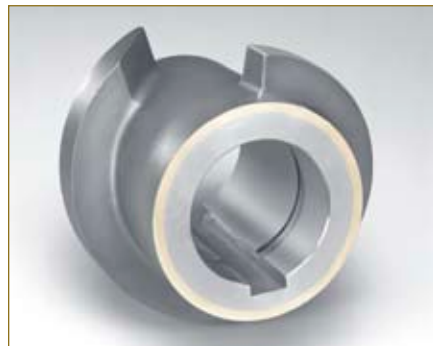
## Pressor® Screw Presses

Five models provide a range of capacities from 1,500 to 12,000 pounds of feed per hour.

Dupps Pressor high pressure screw presses are available in a wide range of sizes and configurations—from the largest, a high-throughput 13" shaft model, to a compact and efficient 7" unit ideal for smaller plants. Designed to produce lower residuals from a variety of materials, Pressors are available with horsepower ratings between 30 to 300 HP. A variety of shaft designs—including PRC (Press Release Cut), CT (Continuous Taper) and the original Dupps Pressor shaft—allow you to match shaft profile to feed stock materials and operating conditions to achieve the ideal residual content and greatest throughput. All Pressor models offer proven reliability, rugged construction and

feature a single motor to drive all mechanical parts. Other features include:

- An eye-level feed hopper and simplified design to assure easy surveillance.
- A rugged gear box (designed and built by Dupps) and heavy-duty bearings that run in oil to minimize maintenance.
- A gallery-type lubrication system to assure an oil supply without a pump.
- A hydraulically operated automatic choke that can be easily varied at the control panel.
- All-steel, heavy-duty construction provides lifetime service.



### Pressor® screw presses feature Tuff-Cast™ flights

Made with a patented bi-metallic casting process, Tuff-Cast flights feature a hard, wear-resistant surface bonded to a softer core. The result is dramatically increased durability and shaft life.

### Specifications\*

MODEL	LENGTH		WIDTH		HEIGHT		DRY WEIGHT	
	ft.	mm	in.	mm	in.	mm	lbs.	kg
13-13-6	18' 3 1/2"	5,575	77 1/2"	1,969	74"	1,880	41,900	19,045
12-12-4	15' 5 3/8"	4,709	64"	1,626	64"	1,626	22,750	10,340
12-10-6	17' 5 3/8"	5,318	64"	1,626	64"	1,626	22,815	10,370
12-10-4	15' 3 3/8"	4,658	64"	1,626	64"	1,626	19,700	8,950
9-7-3	10'-0"	3,048	55"	1,397	55 1/2"	1,410	9,300	4,230

\* Typical configurations shown. Many variations available.

## Come to us with your pressing needs.

Our first step will be to put you in touch with an experienced application engineer who will work with you to turn your process requirements into profitable opportunities.

If you wish, we'll bring mobile pilot testing equipment to your site to insure the best possible evaluation of your process requirements. And we have a testing facility at our factory in Germantown, Ohio.

After your screw press is delivered, it will be backed up by a large computer-monitored parts inventory. Any standard replacement parts you may need for routine maintenance will be shipped within 24 hours of your order.

### Come see for yourself

We invite you to tour our facilities and meet our people before you make your investment decision. Compare our capabilities, our products and our level of knowledge and experience with every competitor in the industry. When you know all the facts, we're sure you'll agree that Dupps is your logical choice.

New screw press applications come every year. But one thing that will never change is our dedication to the simple, basic promise we offer you today and tomorrow: Dupps won't let you down.



### **The Dupps Company**

P. O. Box 189

Germantown, Ohio 45327

Phone 937/855-6555

Fax 937/855-6554

[www.dupps.com](http://www.dupps.com)

E-mail: [info@dupps.com](mailto:info@dupps.com)

© 2016 The Dupps Company

Printed in U.S.A.